

TABLEAU RECAPITULATIF DES PARCELLES EXPLOITEES

| Ilot | Nom de la parcelle                 | Surface (ha) | Surf. exclue Fumier (ha) | SPE Fumier (ha) | Surf. exclue Usier (ha) | SPE Usier (ha) | Commune        |
|------|------------------------------------|--------------|--------------------------|-----------------|-------------------------|----------------|----------------|
| 1    | 1.1 Pesneau                        | 5.42         | 0.03                     | 5.39            | 0.75                    | 4.67           | Guémené-Penfao |
| 2    | 2.1 La Touche                      | 2.36         | 0.21                     | 2.15            | 0.21                    | 2.15           | Guémené-Penfao |
| 2    | 2.11                               | 0.10         | 0.00                     | 0.10            | 0.00                    | 0.10           | Guémené-Penfao |
| 2    | 2.13                               | 5.02         | 0.50                     | 4.52            | 0.50                    | 4.52           | Guémené-Penfao |
| 2    | 2.14 La Touche                     | 2.17         | 0.17                     | 1.99            | 0.17                    | 1.99           | Guémené-Penfao |
| 2    | 2.15 La Vigne La Grotte            | 3.49         | 0.13                     | 3.36            | 0.70                    | 2.79           | Guémené-Penfao |
| 2    | 2.16, 10 et 12                     | 11.83        | 4.49                     | 7.34            | 5.08                    | 6.75           | Guémené-Penfao |
| 2    | 2.3 La Vigne La Grotte             | 4.19         | 0.00                     | 4.19            | 0.00                    | 4.19           | Guémené-Penfao |
| 2    | 2.7                                | 1.19         | 0.00                     | 1.19            | 0.28                    | 0.91           | Guémené-Penfao |
| 2    | 2.8                                | 2.01         | 0.02                     | 1.99            | 0.02                    | 1.99           | Guémené-Penfao |
| 2    | 2.9 Coté Chauvin                   | 2.72         | 1.38                     | 1.35            | 1.38                    | 1.35           | Guémené-Penfao |
| 4    | 4.1 Pesneau                        | 0.44         | 0.25                     | 0.19            | 0.44                    | 0.00           | Guémené-Penfao |
| 4    | 4.3 Pré Marie Pesneau              | 3.25         | 3.12                     | 0.13            | 3.23                    | 0.02           | Guémené-Penfao |
| 4    | 4.4 Pesneau                        | 4.58         | 0.50                     | 4.08            | 1.90                    | 2.68           | Guémené-Penfao |
| 5    | 5.3                                | 0.27         | 0.27                     | 0.00            | 0.27                    | 0.00           | Guémené-Penfao |
| 5    | 5.4 En dessous Dedette             | 7.28         | 0.63                     | 6.65            | 1.83                    | 5.45           | Guémené-Penfao |
| 5    | 5.4 Jean Robert                    | 5.85         | 0.56                     | 5.29            | 2.03                    | 3.83           | Guémené-Penfao |
| 6    | 6-2 Bord de route Beslé            | 4.09         | 0.05                     | 4.04            | 0.75                    | 3.34           | Guémené-Penfao |
| 6    | 6-4                                | 2.11         | 0.08                     | 2.04            | 0.31                    | 1.80           | Guémené-Penfao |
| 6    | 6-5 Bas Avenue                     | 4.81         | 1.26                     | 3.54            | 1.26                    | 3.54           | Guémené-Penfao |
| 6    | 6-6 Croix Epine                    | 2.37         | 0.10                     | 2.27            | 0.48                    | 1.89           | Guémené-Penfao |
| 6    | 6-7 Croix Epine Petit Bois         | 4.76         | 0.01                     | 4.75            | 0.01                    | 4.75           | Guémené-Penfao |
| 7    | 7.2 Hervé Bureau                   | 4.79         | 0.17                     | 4.62            | 1.16                    | 3.63           | Guémené-Penfao |
| 7    | 7.5 La Zone                        | 4.68         | 0.13                     | 4.55            | 0.90                    | 3.78           | Guémené-Penfao |
| 7    | 7.6 Devant maison croix de l'épine | 7.39         | 0.01                     | 7.38            | 0.73                    | 6.66           | Guémené-Penfao |
| 8    | 8 Avenue Beau Soleil sortie drain  | 2.31         | 0.00                     | 2.31            | 0.00                    | 2.31           | Guémené-Penfao |
| 8    | 8-1 Bas Avenue                     | 0.90         | 0.00                     | 0.90            | 0.00                    | 0.90           | Guémené-Penfao |
| 9    | 9.2 Avenue Beau Soleil             | 6.93         | 0.87                     | 6.06            | 0.87                    | 6.06           | Guémené-Penfao |
| 9    | 9.3 Avenue Beau Soleil             | 0.16         | 0.16                     | 0.00            | 0.16                    | 0.00           | Guémené-Penfao |
| 10   | 10.4 Coté étang Blachez            | 1.99         | 0.33                     | 1.66            | 0.33                    | 1.66           | Guémené-Penfao |
| 11   | 11.2 Avenue Beau Soleil            | 8.72         | 0.00                     | 8.72            | 0.01                    | 8.72           | Guémené-Penfao |
| 12   | 12.1 Entre les 2 étangs            | 6.66         | 1.61                     | 5.05            | 1.61                    | 5.05           | Guémené-Penfao |
| 12   | 12.2 Entre les 2 étangs            | 0.26         | 0.26                     | 0.00            | 0.26                    | 0.00           | Guémené-Penfao |
| 13   | 13.1 Seillé                        | 3.82         | 0.00                     | 3.82            | 0.00                    | 3.82           | Guémené-Penfao |
| 14   | 14.2 Pussac                        | 2.01         | 0.31                     | 1.69            | 1.21                    | 0.80           | Guémené-Penfao |
| 15   | 15.3 Loquet                        | 5.33         | 1.19                     | 4.14            | 3.10                    | 2.23           | Guémené-Penfao |
| 15   | 15.4 Loquet                        | 0.04         | 0.04                     | 0.00            | 0.04                    | 0.00           | Guémené-Penfao |
| 16   | 16.5 Marais de Pussac              | 4.17         | 4.17                     | 0.00            | 4.17                    | 0.00           | Guémené-Penfao |
| 17   | 17.8 Coté peupliers Leblay         | 1.45         | 1.45                     | 0.00            | 1.45                    | 0.00           | Guémené-Penfao |
| 18   | 18.10                              | 0.93         | 0.93                     | 0.00            | 0.93                    | 0.00           | Guémené-Penfao |
| 19   | 19.11 4 routes                     | 8.38         | 0.00                     | 8.38            | 0.00                    | 8.38           | Guémené-Penfao |
| 20   | 20.2 Orvault côté stabul           | 3.90         | 0.00                     | 3.90            | 0.11                    | 3.79           | Guémené-Penfao |
| 20   | 20.3 Orvault côté stabul           | 0.48         | 0.00                     | 0.48            | 0.11                    | 0.38           | Guémené-Penfao |

| Etat | Nom de la parcelle               | Surface (ha) | Surf. exclue Fumier (ha) | SPE Fumier (ha) | Surf. exclue Lisier (ha) | SPE Lisier (ha) | Commune        |
|------|----------------------------------|--------------|--------------------------|-----------------|--------------------------|-----------------|----------------|
| 21   | 21.14 Cordalet                   | 0.30         | 0.30                     | 0.00            | 0.30                     | 0.00            | Guémené-Penfao |
| 22   | 22.1 Orvault bord route Redon    | 2.16         | 2.16                     | 0.00            | 2.16                     | 0.00            | Guémené-Penfao |
| 23   | 23.1 Le Péron                    | 8.02         | 0.20                     | 7.82            | 1.16                     | 6.86            | Guémené-Penfao |
| 25   | 25.18 Le Tertre                  | 2.25         | 0.00                     | 2.25            | 0.00                     | 2.25            | Guémené-Penfao |
| 26   | 26.19 Le Tertre                  | 2.04         | 0.00                     | 2.04            | 0.00                     | 2.04            | Guémené-Penfao |
| 27   | 27.1 les chiens                  | 5.25         | 0.18                     | 5.07            | 0.96                     | 4.29            | Guémené-Penfao |
| 27   | 27.2 les chiens                  | 4.01         | 0.00                     | 4.01            | 0.00                     | 4.01            | Guémené-Penfao |
| 27   | 27.3 les chiens                  | 4.63         | 0.12                     | 4.51            | 0.92                     | 3.71            | Guémené-Penfao |
| 28   | 28.22                            | 1.80         | 1.80                     | 0.00            | 1.80                     | 0.00            | Guémené-Penfao |
| 29   | 29.24 Marais Lavrière Yvon       | 0.79         | 0.49                     | 0.30            | 0.49                     | 0.30            | Guémené-Penfao |
| 30   | 30.1 Le Rheu                     | 1.51         | 0.76                     | 0.75            | 0.76                     | 0.75            | Guémené-Penfao |
| 31   | 31.27                            | 0.20         | 0.20                     | 0.01            | 0.20                     | 0.01            | Guémené-Penfao |
| 32   | 32.1 Chatelet étang              | 1.54         | 0.40                     | 1.14            | 0.40                     | 1.14            | Guémené-Penfao |
| 33   | 33.30 La Jalousie bois fleuri    | 6.64         | 1.17                     | 5.47            | 2.02                     | 4.62            | Guémené-Penfao |
| 33   | 33.31 La Jalousie Bois Fleuri    | 0.22         | 0.22                     | 0.00            | 0.22                     | 0.00            | Guémené-Penfao |
| 34   | 34.32 Baleron                    | 0.55         | 0.24                     | 0.31            | 0.24                     | 0.31            | Guémené-Penfao |
| 35   | 35.33 Roiné                      | 7.12         | 0.33                     | 6.79            | 1.19                     | 5.92            | Guémené-Penfao |
| 36   | 36.1 Côté Jalousie laigle        | 0.19         | 0.19                     | 0.00            | 0.19                     | 0.00            | Guémené-Penfao |
| 36   | 36.34 côté Jalousie Laigle       | 3.98         | 1.00                     | 2.98            | 1.00                     | 2.98            | Guémené-Penfao |
| 37   | 37.1 côté JAMBU                  | 7.95         | 0.00                     | 7.95            | 0.00                     | 7.95            | Guémené-Penfao |
| 37   | 37.4 La Jalousie                 | 13.80        | 0.73                     | 13.07           | 2.19                     | 11.61           | Guémené-Penfao |
| 38   | 38-2 et 200 Orvault Padoc        | 1.94         | 0.64                     | 1.30            | 1.60                     | 0.34            | Guémené-Penfao |
| 38   | 38-4 Orvault                     | 13.26        | 0.55                     | 12.71           | 2.85                     | 10.40           | Guémené-Penfao |
| 39   | 39.2 Marais de l'Epinay          | 3.08         | 3.08                     | 0.00            | 3.08                     | 0.00            | Guémené-Penfao |
| 40   | 40.1 et 49 Champ Melors échange  | 5.87         | 0.51                     | 5.36            | 1.89                     | 3.98            | Guémené-Penfao |
| 41   | 41.1 Cheval                      | 6.06         | 0.07                     | 6.00            | 1.13                     | 4.93            | Guémené-Penfao |
| 42   | 42.1                             | 2.77         | 0.15                     | 2.62            | 0.93                     | 1.84            | Guémené-Penfao |
| 43   | 43.1 Bord de rte Fégréac Drion L | 9.51         | 0.00                     | 9.51            | 0.88                     | 8.63            | Guémené-Penfao |
| 44   | 44.2 Echange Mélois Bois Joll    | 3.53         | 0.00                     | 3.53            | 0.16                     | 3.37            | Guémené-Penfao |
| 45   | 45.2 Le Chatelet                 | 14.03        | 0.00                     | 14.03           | 0.38                     | 13.65           | Guémené-Penfao |
| 46   | 46.2 Le Tertre Loic              | 3.75         | 0.36                     | 3.39            | 1.21                     | 2.54            | Guémené-Penfao |
| 48   | 48.1                             | 3.10         | 0.00                     | 3.10            | 0.00                     | 3.10            | Guémené-Penfao |
| 52   | 52.1                             | 0.55         | 0.55                     | 0.00            | 0.55                     | 0.00            | Guémené-Penfao |
| 53   | 53.1 Etang Loic                  | 2.50         | 2.50                     | 0.00            | 2.50                     | 0.00            | Guémené-Penfao |
| 54   | 54.1 Butte déminière             | 5.45         | 0.44                     | 5.01            | 1.43                     | 4.02            | Guémené-Penfao |
| 55   | 55.1 Cotily                      | 4.68         | 0.05                     | 4.64            | 0.54                     | 4.15            | Guémené-Penfao |
| 56   | 56.1 Douet                       | 7.06         | 0.18                     | 6.89            | 0.83                     | 6.23            | Guémené-Penfao |
| 57   | 57.2 Dose Bodiguel               | 14.07        | 0.37                     | 13.70           | 1.41                     | 12.67           | Guémené-Penfao |
| 58   | 58.4 La Dose                     | 13.39        | 0.34                     | 13.05           | 1.92                     | 11.47           | Guémené-Penfao |
| 59   | 59.12 Raftegeau                  | 3.85         | 0.00                     | 3.85            | 0.00                     | 3.85            | Guémené-Penfao |
| 61   | 61.1 Les Pilaïs                  | 3.09         | 0.00                     | 3.09            | 0.00                     | 3.09            | Guémené-Penfao |
| 63   | 63.2                             | 2.60         | 0.13                     | 2.48            | 0.99                     | 1.61            | Guémené-Penfao |
| 64   | 64.1 Marie Poulain               | 3.33         | 0.00                     | 3.33            | 0.00                     | 3.33            | Guémené-Penfao |
| 65   | 65.1                             | 1.87         | 0.12                     | 1.75            | 1.43                     | 0.44            | Guémené-Penfao |
| 65   | 65.4                             | 0.19         | 0.06                     | 0.14            | 0.17                     | 0.02            | Guémené-Penfao |

| Ilot | Nom de la parcelle   | Surface (ha)  | Surf. exclue Fumier (ha) | SPE Fumier (ha) | Surf. exclue Lisier (ha) | SPE Lisier (ha) | Commune        |
|------|----------------------|---------------|--------------------------|-----------------|--------------------------|-----------------|----------------|
| 66   | 66.3                 | 25.74         | 0.00                     | 25.74           | 0.00                     | 25.74           | Guémené-Penfao |
| 67   | 67.1                 | 0.33          | 0.33                     | 0.01            | 0.33                     | 0.01            | Guémené-Penfao |
| 67   | 67.2                 | 0.72          | 0.16                     | 0.56            | 0.16                     | 0.56            | Guémené-Penfao |
| 69   | 69.1 Cotilly Blocaus | 3.50          | 0.56                     | 2.94            | 0.56                     | 2.94            | Guémené-Penfao |
| 69   | 69.2 Cotilly Blocaus | 0.09          | 0.09                     | 0.00            | 0.09                     | 0.00            | Guémené-Penfao |
| 70   | 70.1 L'Enfer 1       | 15.73         | 3.28                     | 12.45           | 3.28                     | 12.45           | Guémené-Penfao |
| 71   | 71.1 L'Enfer 2       | 7.70          | 1.33                     | 6.37            | 1.33                     | 6.37            | Guémené-Penfao |
| 72   | 72.1 Moutons         | 0.95          | 0.02                     | 0.93            | 0.02                     | 0.93            | Guémené-Penfao |
| 73   | 73 Echange Julod     | 4.33          | 0.00                     | 4.33            | 0.00                     | 4.33            | Guémené-Penfao |
| 74   | 74                   | 2.71          | 0.34                     | 2.37            | 0.76                     | 1.95            | Guémené-Penfao |
| 75   | 75                   | 0.92          | 0.57                     | 0.35            | 0.57                     | 0.35            | Guémené-Penfao |
| 76   | 76                   | 4.20          | 0.07                     | 4.13            | 0.84                     | 3.36            | Guémené-Penfao |
| 77   | 77                   | 7.46          | 0.00                     | 7.46            | 0.05                     | 7.40            | Guémené-Penfao |
| 78   | 78 GP BE             | 0.07          | 0.07                     | 0.00            | 0.07                     | 0.00            | Guémené-Penfao |
| 78   | 78.1 GP              | 0.44          | 0.43                     | 0.01            | 0.43                     | 0.01            | Guémené-Penfao |
| 78   | 78.2 GP              | 2.98          | 0.43                     | 2.56            | 0.43                     | 2.56            | Guémené-Penfao |
| 79   | 79 Pommiers          | 0.58          | 0.00                     | 0.58            | 0.00                     | 0.58            | Guémené-Penfao |
| 79   | 79 Pommiers          | 4.40          | 0.22                     | 4.18            | 0.37                     | 4.03            | Guémené-Penfao |
| 79   | 79 Pommiers          | 0.25          | 0.05                     | 0.20            | 0.05                     | 0.20            | Guémené-Penfao |
| 80   | 80 DERVAL            | 0.09          | 0.09                     | 0.00            | 0.09                     | 0.00            | Guémené-Penfao |
| 80   | 80 DERVAL            | 0.89          | 0.55                     | 0.33            | 0.55                     | 0.33            | Guémené-Penfao |
| 80   | 80 DERVAL            | 7.42          | 0.64                     | 6.78            | 0.64                     | 6.78            | Guémené-Penfao |
| 80   | 80 DERVAL            | 0.09          | 0.09                     | 0.00            | 0.09                     | 0.00            | Guémené-Penfao |
| 81   | 81 Porcherie         | 11.37         | 0.05                     | 11.32           | 0.79                     | 10.58           | Guémené-Penfao |
| 82   | 82 Beix              | 6.14          | 0.58                     | 5.56            | 1.54                     | 4.59            | Guémené-Penfao |
| 83   | 83                   | 2.93          | 2.93                     | 0.00            | 2.93                     | 0.00            | Guémené-Penfao |
| 84   | 84 Libon             | 3.99          | 0.00                     | 3.99            | 0.55                     | 3.44            | Guémené-Penfao |
| 85   | 85                   | 0.45          | 0.00                     | 0.45            | 0.00                     | 0.45            | Guémené-Penfao |
| 86   | 86                   | 0.64          | 0.00                     | 0.64            | 0.00                     | 0.64            | Pierfic        |
| 87   | 87                   | 1.32          | 1.32                     | 0.00            | 1.32                     | 0.00            | Conqueroull    |
| 88   | 88.1 Saffré          | 6.34          | 0.44                     | 5.90            | 1.73                     | 4.61            | Guémené-Penfao |
| 89   | 89.1 Saffré 2        | 1.17          | 0.68                     | 0.50            | 0.68                     | 0.50            | Guémené-Penfao |
|      |                      | <b>486.03</b> |                          | <b>424.80</b>   |                          | <b>384.98</b>   |                |

excl. du PE

surface PE retenu :

486,07

424,16

384,34

(æxpertis) <sup>groupe</sup> igam  
expertise comptable



LEGENDE

- Surface exclue (SPE)
- Surface exclue Fumier
- Surface exclue Lisier

Cause d'exclusion

- Autre zone
- Cours d'eau
- Plan d'eau
- Tiers

*Exclu du plan dépendage*

### PLAN DES PARCELLES





LEGENDE

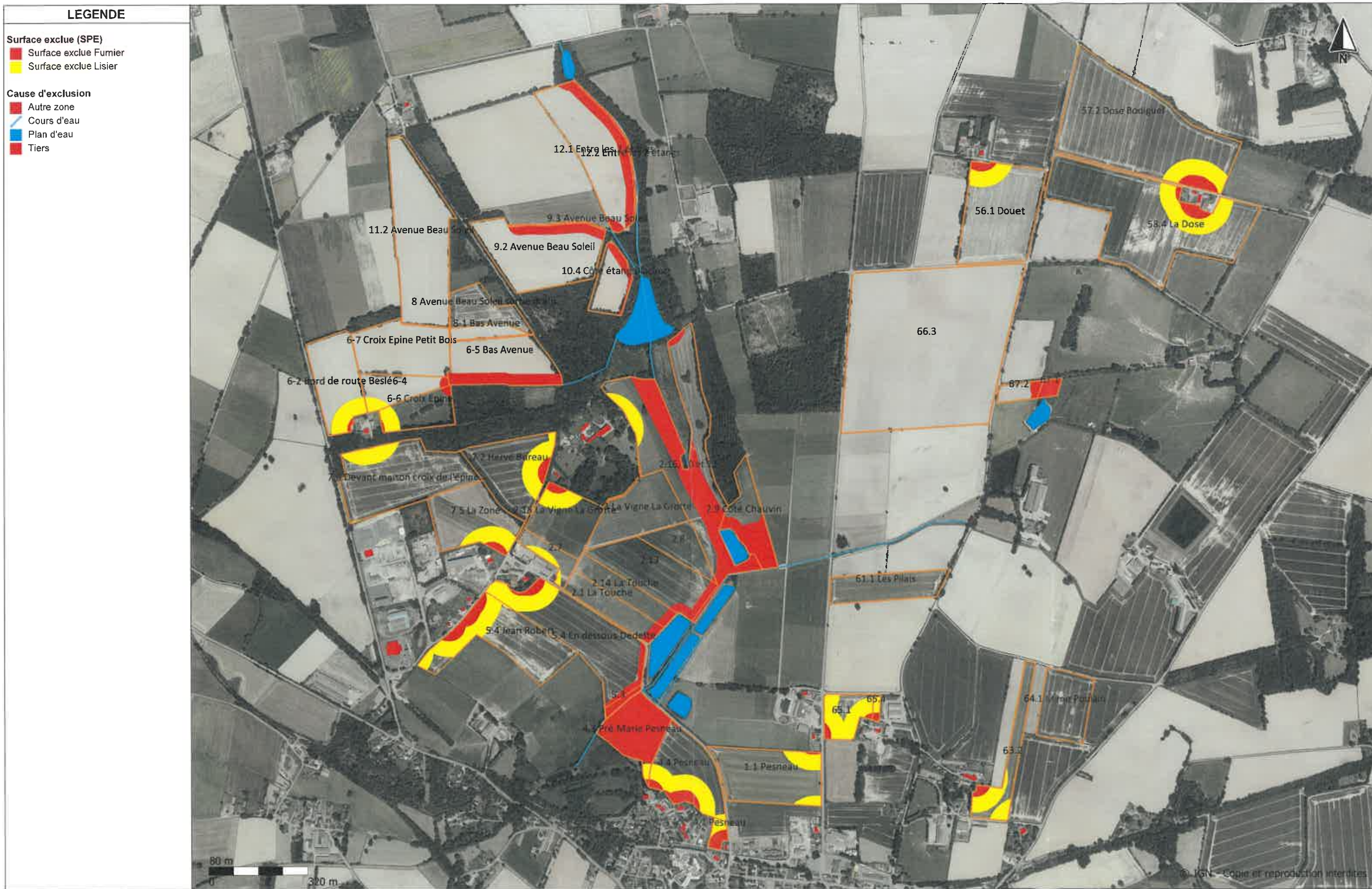
**Surface exclue (SPE)**  
 ■ Surface exclue Fumier  
 ■ Surface exclue Lisier

**Cause d'exclusion**  
 ■ Autre zone  
 / Cours d'eau  
 / Plan d'eau  
 ■ Tiers

*ilot 86  
 proche du pla  
 d'irrigation*

















**LEGENDE**

**Surface exclue (SPE)**

- Surface exclue Fumier
- Surface exclue Lisier

**Cause d'exclusion**

- Autre zone
- Cours d'eau
- Plan d'eau
- Tiers

